

# **Der DataXplorer – BigData für das Kunststoff-Spritzgießen**

Matthias Busl, Dr. Reinhard Schiffers, KraussMaffei Technologies GmbH, 12.05.2017

## Produktportfolio der KraussMaffei Group

Von Einzelkomponenten bis hin zur Produktionsbegleitung

**NETSTAL**



3 Baureihen  
Schließkraft: 50 – 800 t

**KraussMaffei**

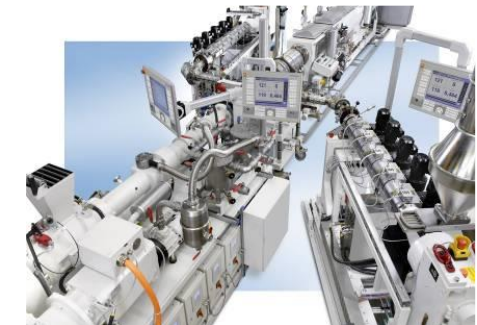


5 Baureihen  
Schließkraft: 35 – 5500 t



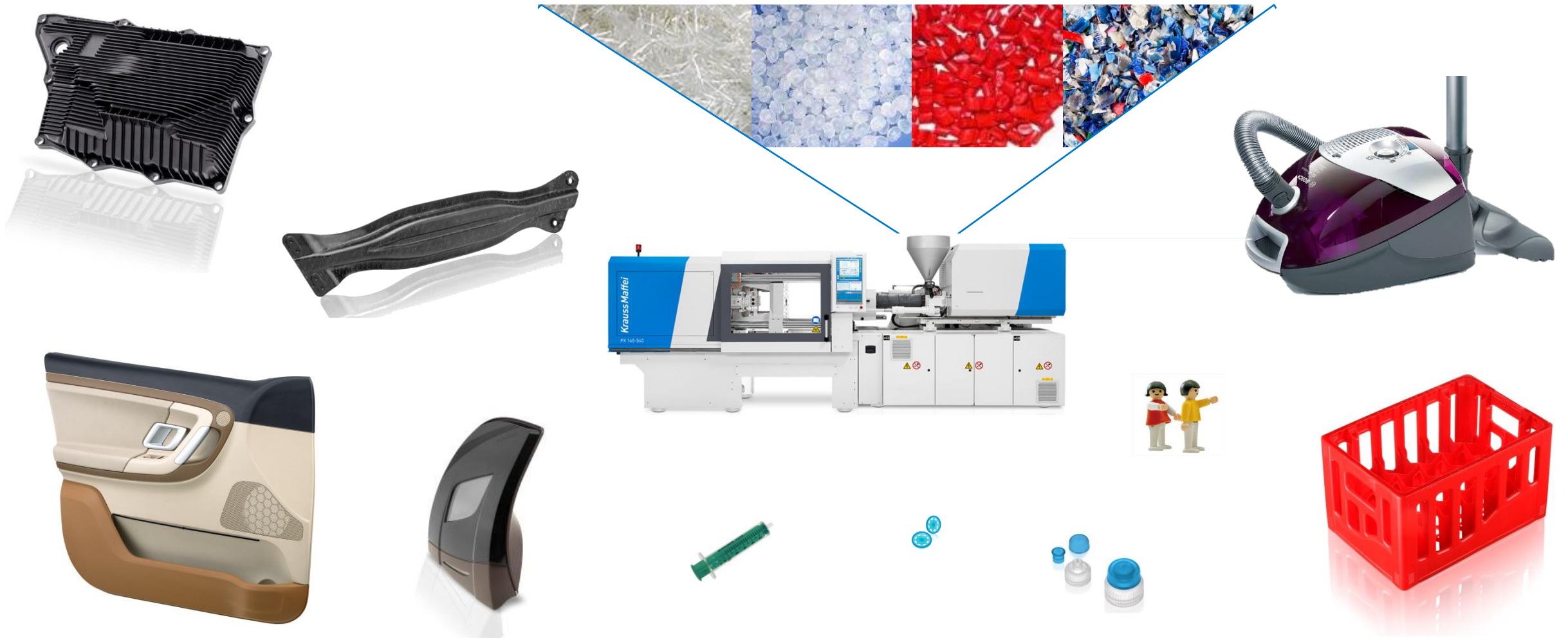
Anlagen zur Herstellung  
von Teilen aus PUR/Reaktionsharzen  
(inkl. Carbonfaserteilen)

**KraussMaffei**  
*Berstorff*

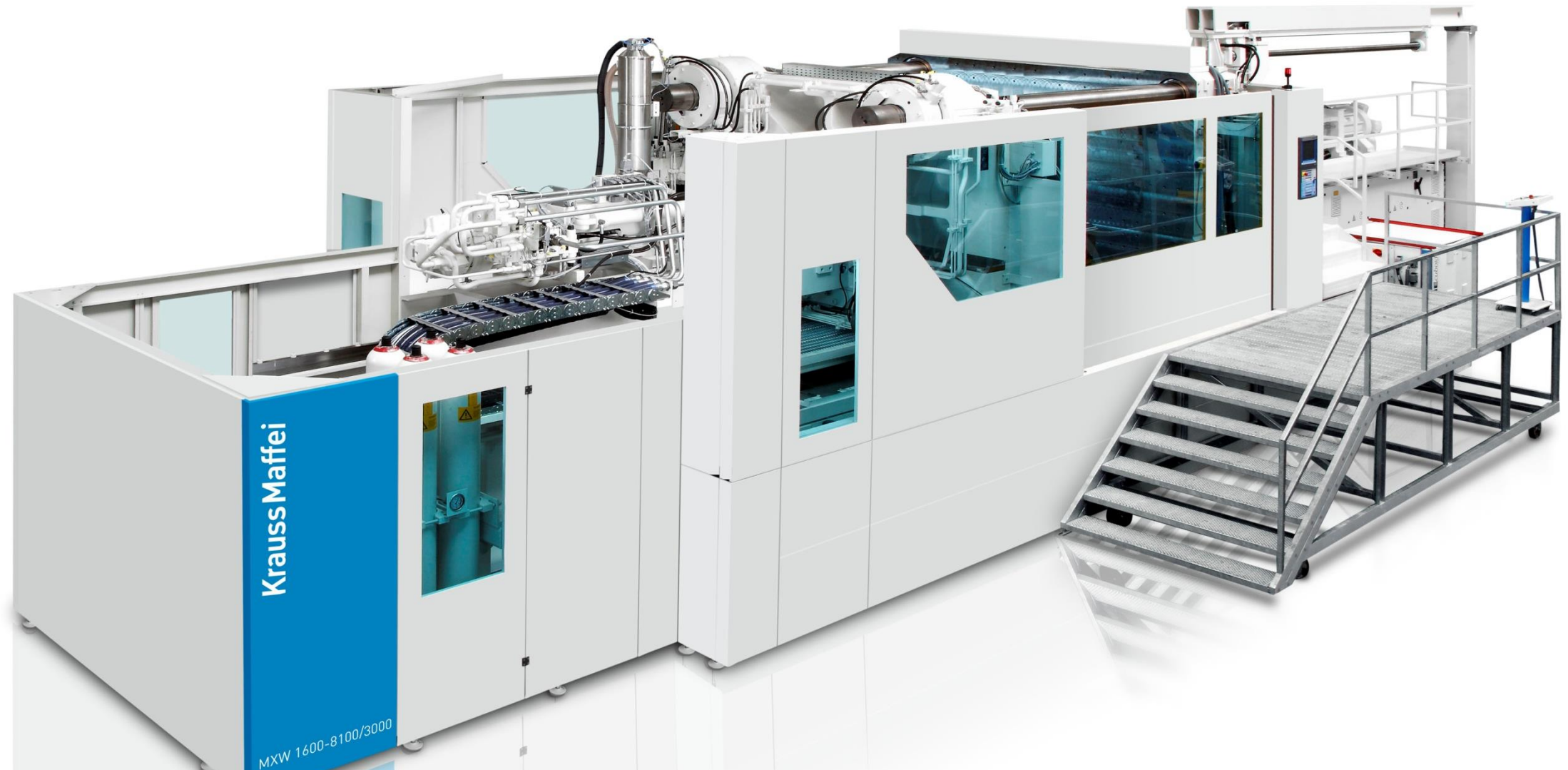


Extruder und Anlagen zur Verarbeitung von  
Kunststoffen und Gummi

## Spritzgießmaschinen – ein Prinzip für (fast) alles

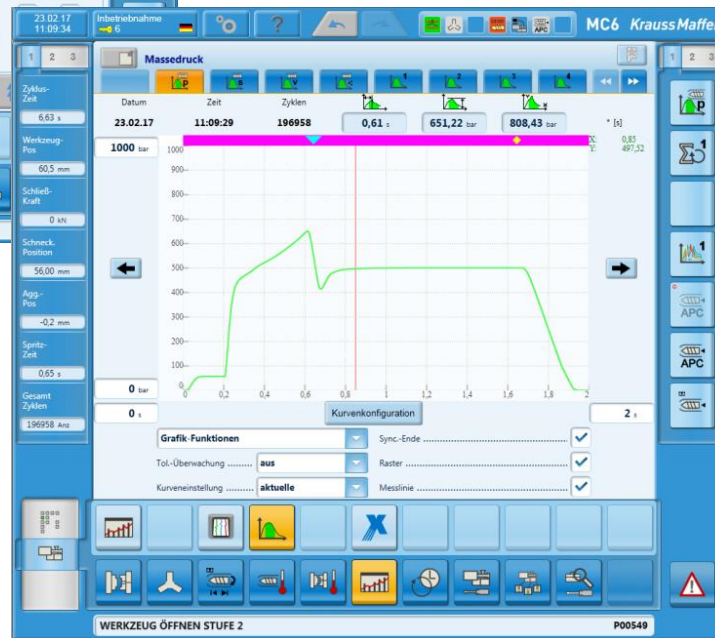
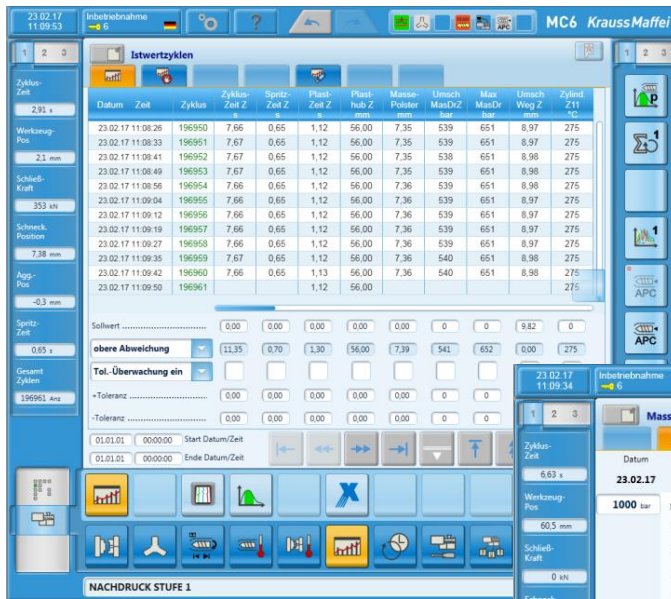


## Spritzgießmaschinen – ein Prinzip für (fast) alles

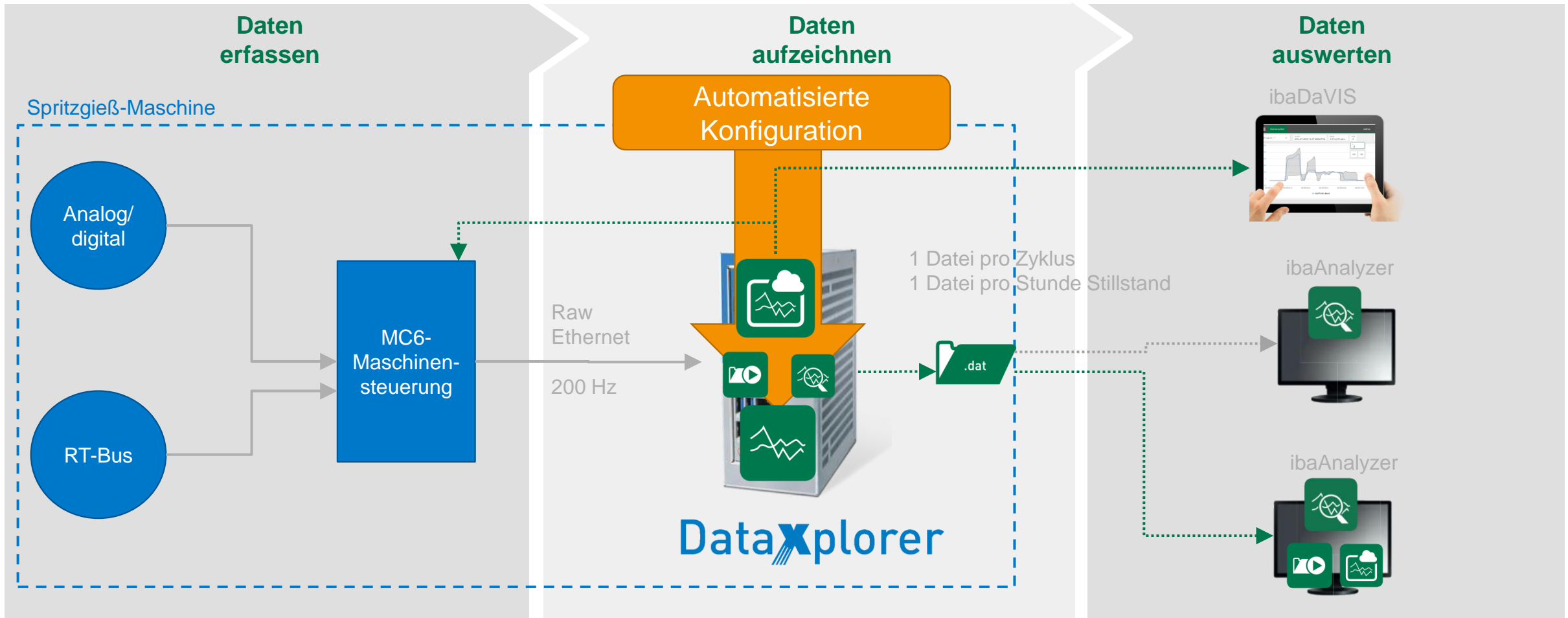




## Daten in der Spritzgusswelt – heute

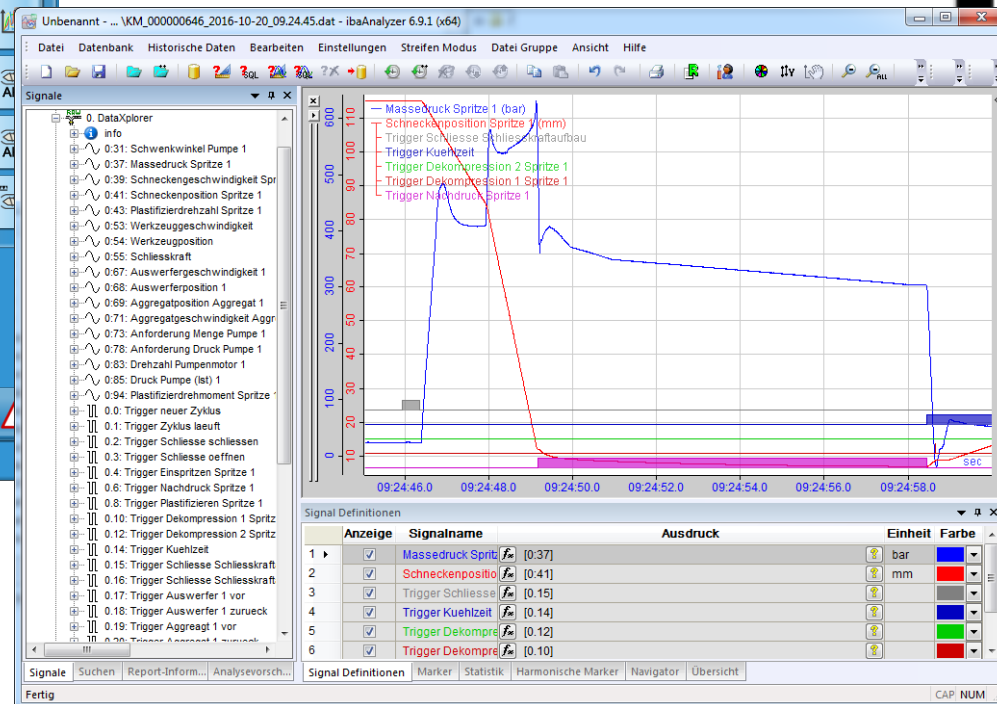
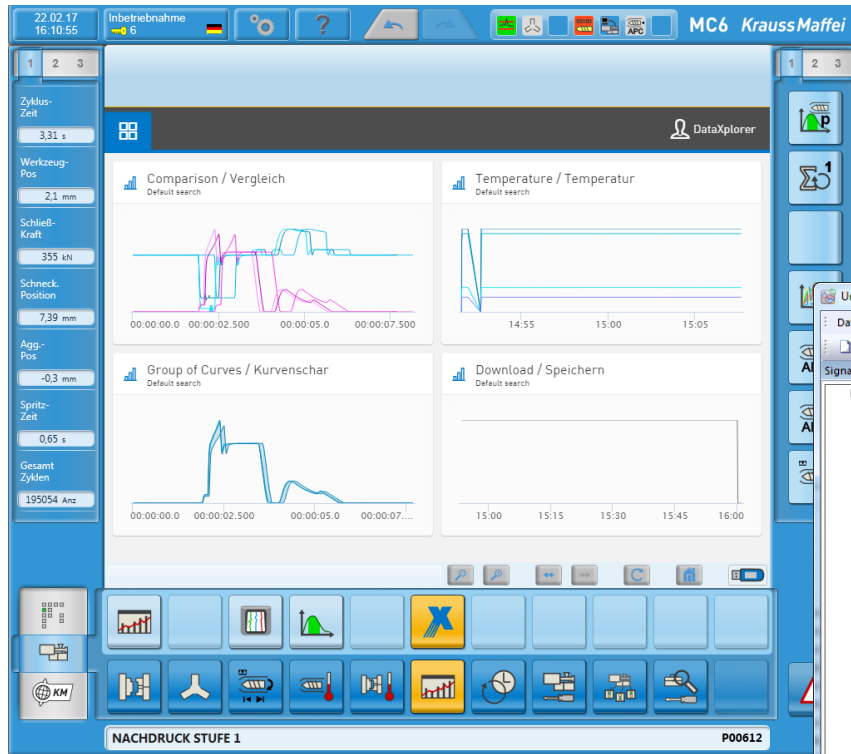


## Der DataXplorer - schematisch



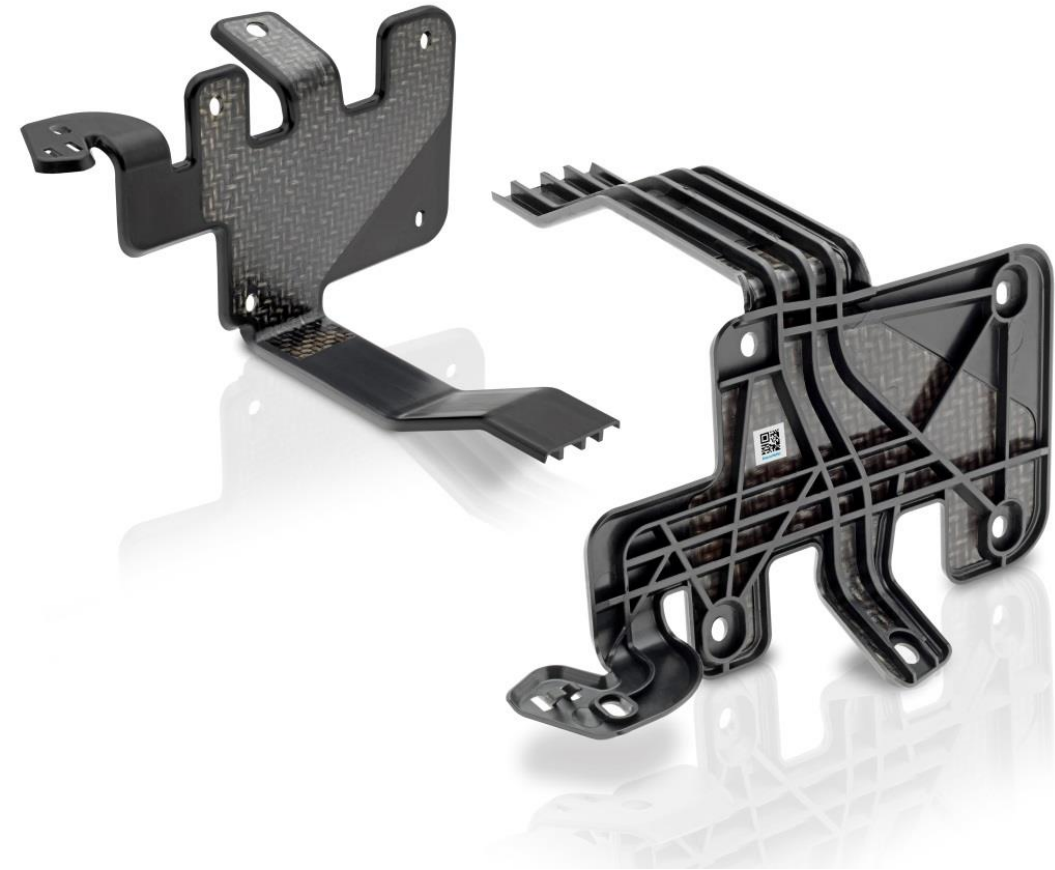
## Daten ansehen und vergleichen


Daten überall verfügbar



## Daten archivieren

Auf neuem Level



In cooperation with  [www.kraussmaffei.com](http://www.kraussmaffei.com)  
[www.iba-ag.com](http://www.iba-ag.com)

**Prototype for a holder**  
 Cycle Number 1084  
 Date / Time 21.09.2016 / 09:45:44

**DataXplorer**

Information	Name	Value
Application	Prototype for a holder	Mean heating rate zone 1 [°C/s]
Material	Polyamide 6: DURETHAN BKV 55 TPX	Heating time [s]
Organo sheet	Glass fibre reinforced polyamide:	Transfer time [s]
	TEPEX® dynalite 102-RG600(2)/47%	Melting temperature [°C]
Clamping force	3000 kN	Plasticizing flow rate [g/s]
Screw diameter	50 mm	Maximum melt pressure [bar]

**Infrared oven heating**

**Injection process**

**Simplified FiberForm process:**  
 The new generation of heating up

- Preheating program for shortened start-up processes
- Synchronous heating up of the individual heating zones by using a control algorithm developed in-house
- Highly dynamic controller prevents the set temperature from being exceeded
- Quality monitoring of the entire heating curve graphically displayed in the MC6

**DataXplorer:**  
 Collection, analysis and documentation of process data

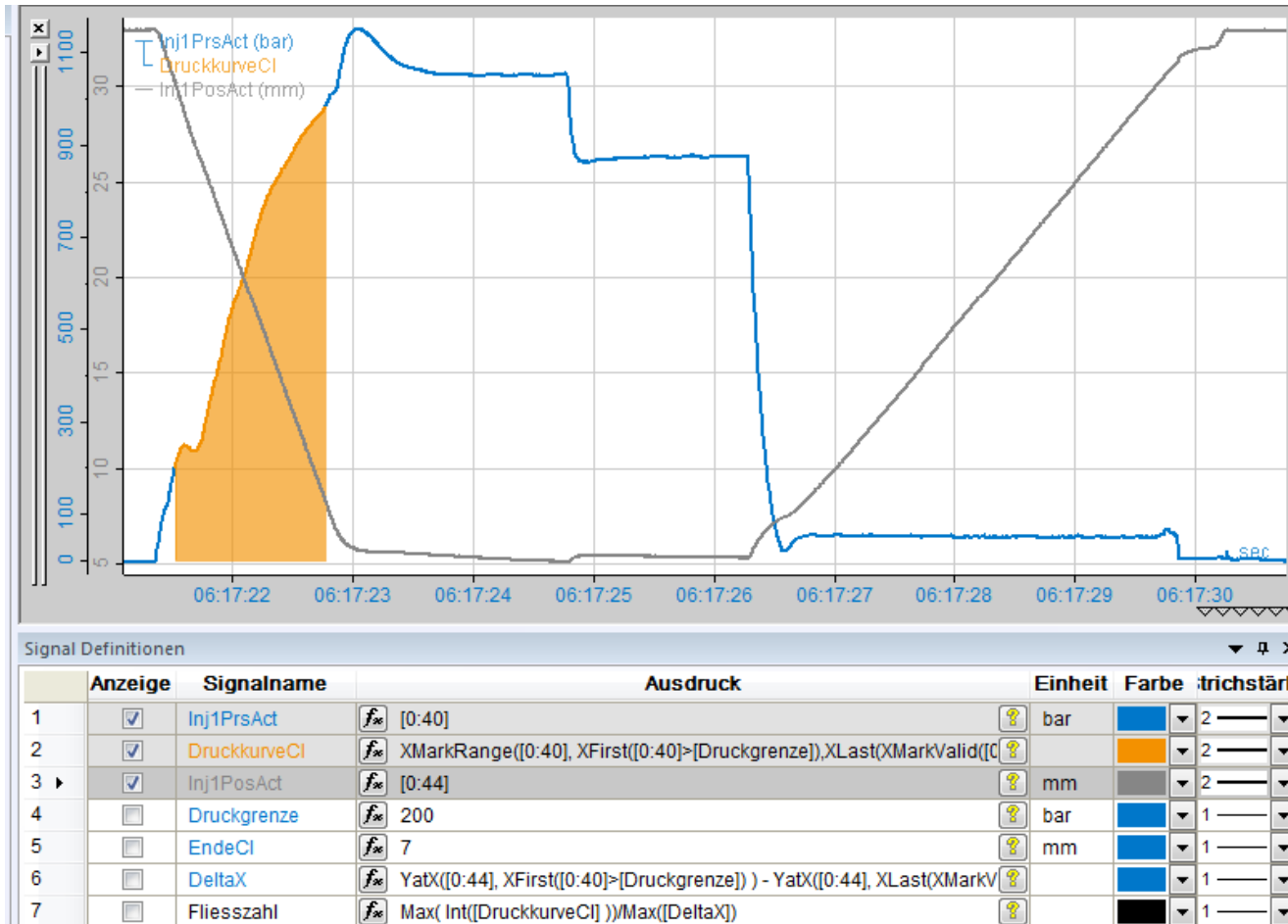
- Uninterrupted monitoring and documentation of processes
- Tuning and optimization of processes
- Easier troubleshooting and diagnosis
- Quality data analysis, troubleshooting, and other evaluations from wherever you are located and beyond corporate boundaries

*Engineering Passion* **KraussMaffei**



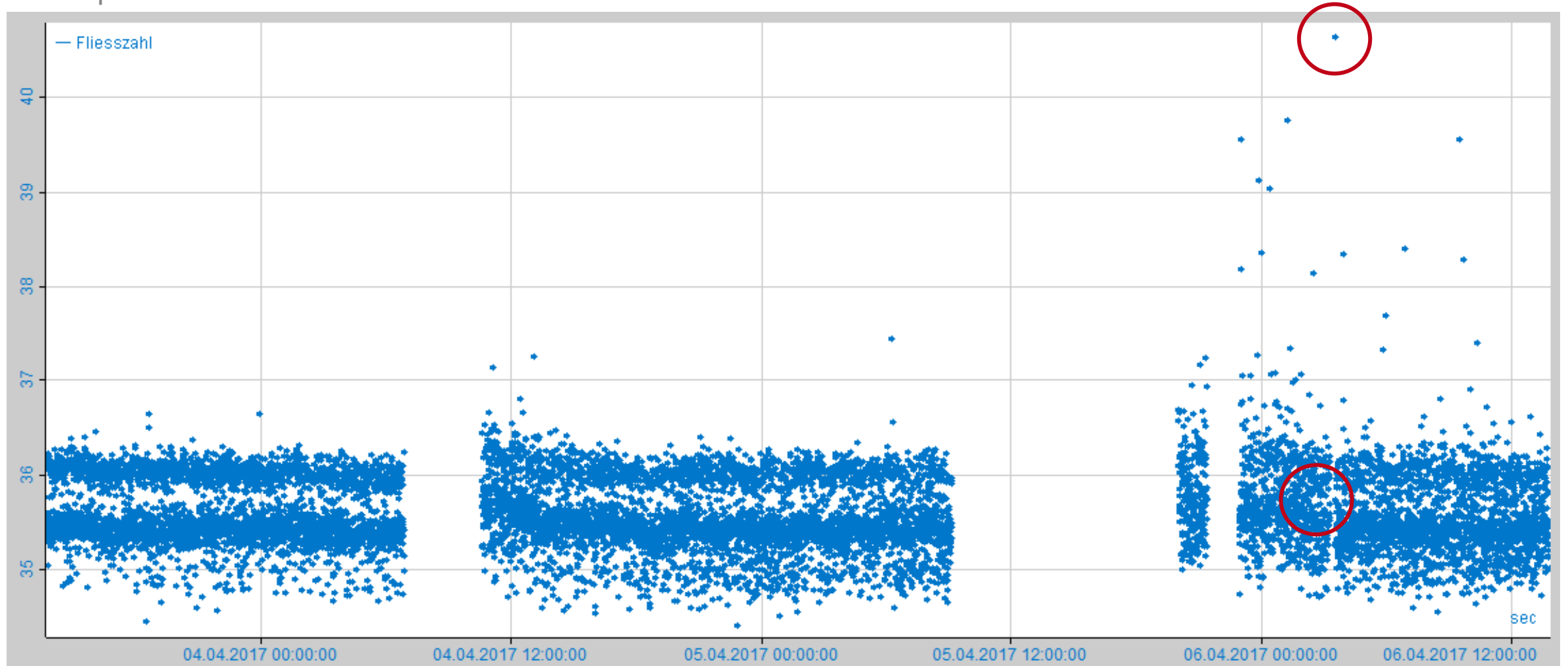
## Daten auswerten

am Beispiel Viskositätskennzahl



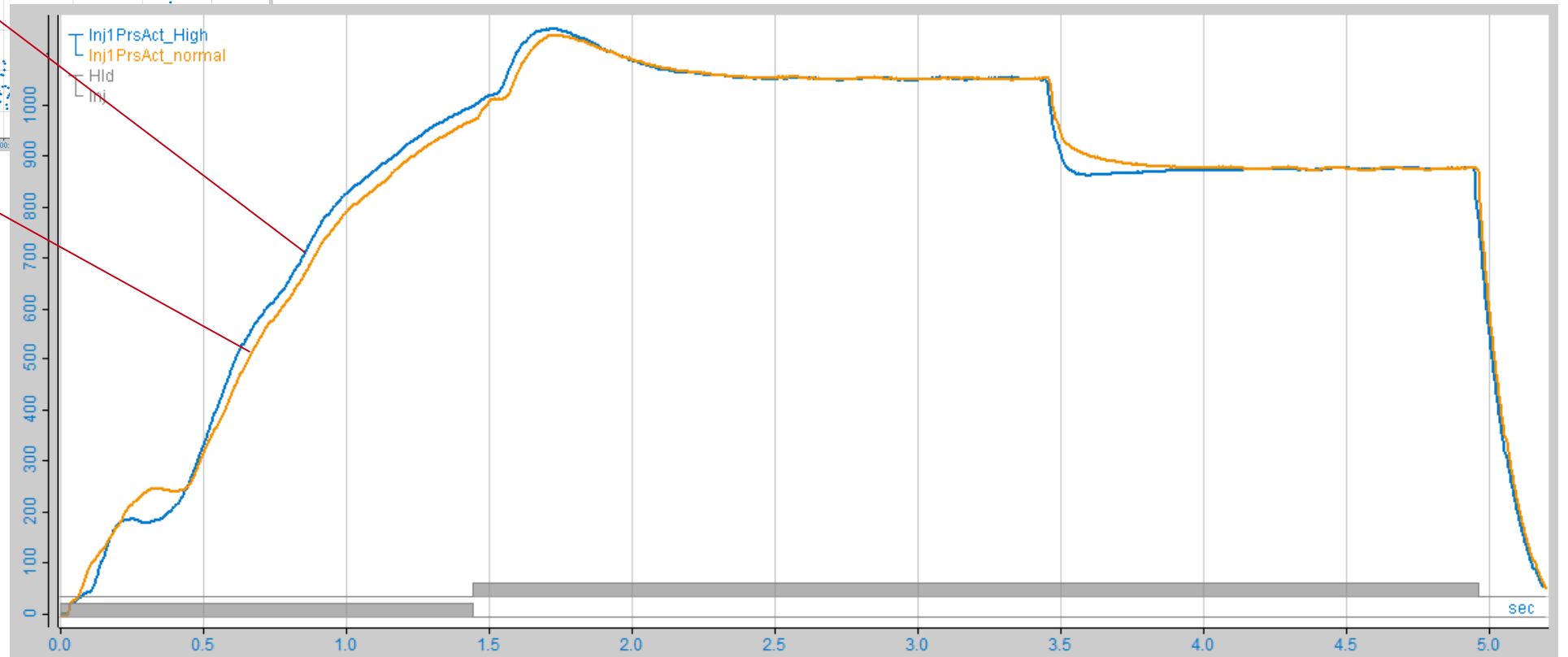
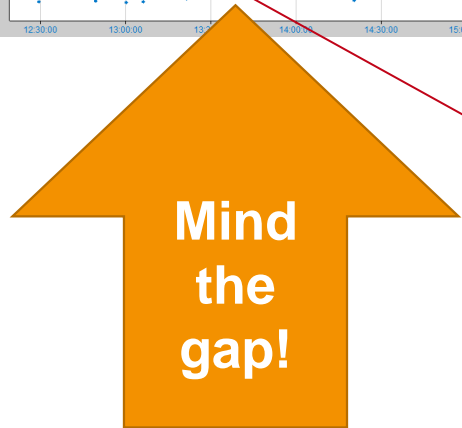
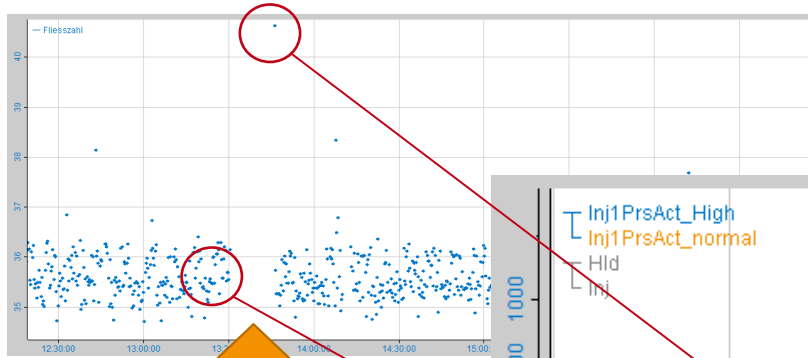
## Daten auswerten

am Beispiel Viskositätskennzahl



## Daten auswerten

am Beispiel Viskositätskennzahl



**Vielen Dank!**

**"The goal is to turn data into information, and information into insight."**

Carly Fiorina, former chief executive of Hewlett-Packard Company or HP.